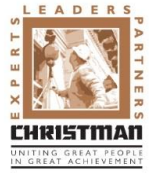




UNDER CONSTRUCTION

Ludington Area Schools MSHS Additions and Renovations



Project is 21% Complete



HS Office Addition



HS Offices



HS Offices

WORK IN PROGRESS

This Month

- Erect Steel on MS
- Install roof on MS classrooms
- Install siding on HS classrooms
- Pour floor in HS office
- Frame walls in HS office
- Install underground water detention tanks

Next Month

- Pave student parking lot
- Install windows on HS office
- Install siding on MS
- Have HS staff lot curbs in place

PROJECT MANAGEMENT UPDATE

Safety

- This month's Safety Goal focuses on tripping hazards

Schedule

- The project is on schedule

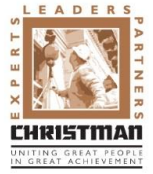
Other Progress

- Oriole field turf starting next month
- Main power feed for MS was repaired
- Receiving construction drawings for team room at the end of the month



UNDER CONSTRUCTION

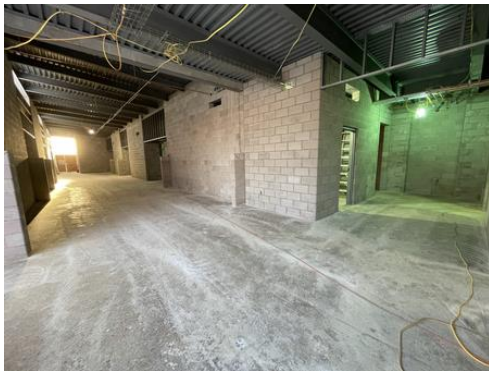
Ludington Area Schools MSHS Additions and Renovations



HS Office Roof



HS Electrical Relocation



HS Classroom Hall



HS Classroom Windows Installed



MS Classroom Exterior



MS Classrooms