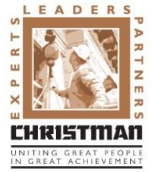




# UNDER CONSTRUCTION

## Ludington Area Schools MSHS Additions and Renovations



Project is 18% Complete



HS Classroom Addition



HS Classroom



HS Classroom Hallway

### WORK IN PROGRESS

#### This Month

- Finish steel erection in the HS office
- Install roof on HS office
- Install windows in HS classrooms
- Complete a majority of block in MS
- Frame exterior of HS office
- MEP rough in at MS and HS

#### Next Month

- Install roof on MS
- Dry in MS addition
- Prep and pour floor in HS office
- Paint inside of HS classrooms

### PROJECT MANAGEMENT UPDATE

#### Safety

- This month's Safety Goal focuses on ladder safety

#### Schedule

- The project is on schedule

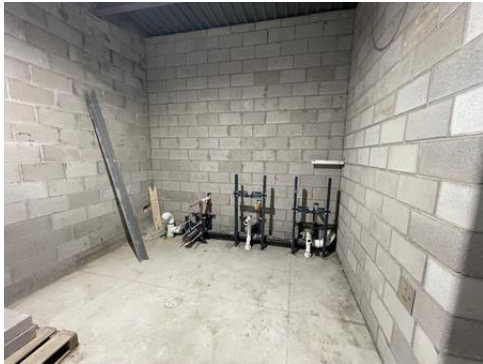
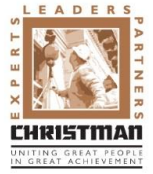
#### Other Progress

- Oriole field turf in coordination phase
- Modifying site / building phasing plans to provide additional classrooms and drop off access during renovations.
- Finalizing team room layout as design progresses.



# UNDER CONSTRUCTION

## Ludington Area Schools MSHS Additions and Renovations



HS Bathroom Group



MS Classrooms



HS Classroom Roof



HS Classroom Roof



HS Office Steel Framing



Exterior HS Classrooms