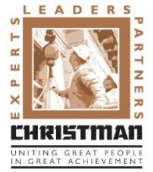




# UNDER CONSTRUCTION

## Ludington Area Schools MSHS Additions and Renovations



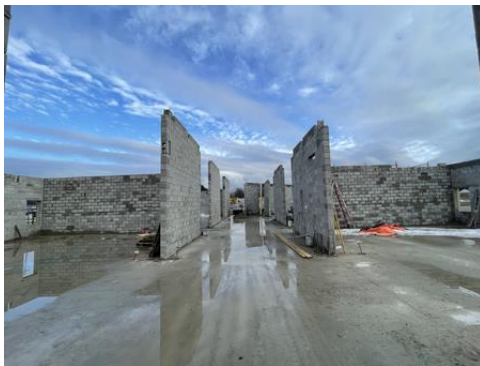
Project is 12% Complete



HS Classroom Addition



HS Classrooms



HS Classrooms

### WORK IN PROGRESS

#### This Month

- Finish load bearing masonry in HS additions
- Finish underground plumbing and electrical in MS
- Pour a portion of floor in the new office and MS classrooms
- Set steel in HS classrooms
- Frame exterior walls in HS classroom addition

#### Next Month

- Finish setting steel in HS office
- Finish block in MS
- Field measure for windows in all additions
- Install Roofing on HS classrooms

### PROJECT MANAGEMENT UPDATE

#### Safety

- This month's Safety Goal focuses on wearing protective equipment

#### Schedule

- The project is on schedule

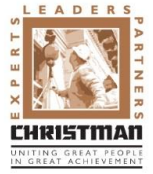
#### Other Progress

- Oriole Field Improvements bidding week of 1/9
- Coordinate fall 2023 classroom placement for teachers
- Oriole Field Team Room design in progress



# UNDER CONSTRUCTION

## Ludington Area Schools MSHS Additions and Renovations



HS Office Additions



HS Classroom



MS Classroom Courtyard



MS Floor Prepped



Interior footings in MS Classrooms



HS Office Underground Plumbing